



DIGITAL RECORDER

USER'S MANUAL

MODEL

DX-TL5000E

ENGLISH

DEUTSCH

FRANÇAIS

ESPAÑOL

РУССКИЙ

ITALIANO

NEDERLANDS

THIS INSTRUCTION MANUAL IS IMPORTANT TO YOU. PLEASE READ IT BEFORE USING YOUR DIGITAL RECORDER.

Caution and care

HEAVY OBJECTS SHOULD NEVER BE PLACED ON THE UNIT (E.G., MONITOR)

NEVER TOUCH OR INSERT ANY OBJECT INSIDE THE UNIT

Touching the inside of the cabinet or inserting foreign objects of any kind through the disc loading slot or ventilation holes not only creates a safety hazard but can also cause extensive damage.

PROTECT THE POWER CORD

Damage to the power cord may cause fire or shock hazard. If the mains cord is damaged, turn OFF the MAIN switch and carefully unplug the cord by holding the mains plug.

If this unit is moved with the power on status, the built-in HDD may be damaged. Confirm that more than one minute have passed since the power cord and the connecting cords were disconnected, then move this unit. Make sure to take the disc out and close the disc loading slot.

UNPLUG THE POWER CORD DURING A LONG ABSENCE

Turn off the power and unplug the power cord during a long absence.

MAINTAIN GOOD VENTILATION

Do not obstruct the many ventilation holes on the unit. For maximum ventilation, leave some space around the unit and place the unit on a hard level surface only, and ensure it is not covered during use. Heavy objects should never be placed on the unit.

WHEN NOT IN USE

When not in use, always eject the disc and turn OFF the MAIN switch.

CABINET CARE

Never use petroleum-based cleaners. Clean with a soft cloth moistened with soap and water and wipe dry.

PVC cables or leads should not be left in contact with the cabinet surface for long periods.

INSTALLATION LOCATION

For excellent performance and lasting reliability install in a location that is:-

1. Well ventilated, out of direct sunlight and away from direct heat.
2. A solid vibration-free surface.
3. Free from high humidity, excessive dust and away from magnetic fields.
4. Please ensure that the ventilation fan located on the unit's back panel is not blocked.

UNSUITABLE LOCATIONS

Placing the unit in the following places might shorten the product life:

- Extremely cold places, such as refrigerated warehouses and ice houses
- Places where excessive hydrogen sulfide is likely to be generated, such as hot-springs areas
- Places or locations with salt air environment.

NO OBJECTS FILLED WITH LIQUIDS, SUCH AS VASES, SHALL BE PLACED ON THE APPARATUS.

DO NOT PLACE HEAVY OBJECT ON THIS UNIT.

DO NOT STEP ONTO THIS UNIT.

DO NOT PLACE ANY OBJECTS IN FRONT OF THE DISC LOADING SLOT.

The unit may drop or fall by losing its balance. It may cause injury or failure of the unit.

WARNING: TO PREVENT FIRE OR SHOCK HAZARD, DO NOT EXPOSE THIS APPARATUS TO RAIN OR MOISTURE. THIS APPARATUS MUST BE GROUNDED.

MAINS LEAD CONNECTION

The mains lead on this unit is fitted with a non-rewireable mains plug, incorporating a 5A fuse. If you need to replace the fuse, use a 5A fuse approved by BSI or ASTA to BS 1362, ensuring you refit the fuse cover. If the mains plug is not suitable for the sockets in your home, and you require to remove the plug, remove the fuse, cut off the plug then dispose of the plug immediately, to avoid a possible electric shock hazard. To refit a new plug, follow these instructions; Green-and-yellow: Earth, Blue: Neutral and Brown: Live. As the colours in the mains lead of this unit may not correspond with the coloured markings identifying the terminals in your plug, proceed as follows.

- The wire which is coloured green-and-yellow must be connected to the terminal in the plug which is marked by the letter E or by the safety earth symbol \perp or coloured green or green-and-yellow.
- The wire which is coloured blue must be connected to the terminal which is marked with the letter N or coloured black.
- The wire which is coloured brown must be connected to the terminal which is marked with the letter L or coloured red.

Notice about construction of the surveillance system using this unit

- This unit can be controlled by the external devices via RS-232C terminal or LAN terminal. This unit can also be used to control the external devices via external terminal, RS-422/485, or RS-232C terminal. Owing to these functions, this unit flexibly applies to the high grade security system, but the whole surveillance system may be affected by the malfunction of this unit or the external devices depending on the setting contents of this unit or the connection or combination between the external devices.
- When configuring a surveillance system using this unit, it is recommended to confirm first that this unit operates normally with the other devices connected or combined.
- It is recommended to copy or back up the important recorded contents to the other devices periodically.
- Damages arising out of any operational error of the surveillance system or loss of the recorded data or any other damages because of any malfunction of this unit are not covered.

There may be cases when the unit's built-in MOTION DETECTION function does not operate properly due to external condition or video input signal or other factors.

The user will not be indemnified for problems (e.g., recording failure or playback failure) that occur with either the unit or a connected device during operation. It is recommended that backups of important recordings are made regularly as a precaution against possible breakdowns and accidents.

Recordable time and product warranty

Continuous recordable time and the estimated time displayed on the menu screen is the continuous recordable time when operating this unit and is not the product warranty period. Furthermore, it is not the period that guarantees life time at the unit.

- This unit uses a built-in hard disk, which is a precision device. Please handle this unit with sufficient care.
- Do not subject this unit to vibrations or shocks. This may cause trouble specially when the power of the unit is turned on or when the hard disk is being accessed, and sufficient care is required.
- Do not disconnect the power plug while the power of the unit is turned on or while recording or playing.
- For early detection of faults, we recommend that you request inspection once a year.

The hard disk and cooling fan are not permanent items and will need replacement with time. When operated in an ambient temperature of 25 °C, it is recommended that both of the hard disk and fan are replaced every 30,000 hours. (This figure is only a guide, and should not be taken as a guaranteed lifespan of the products. Use the <Elapsed Operating Time> (System Menu → Service Info) as a guide to perform checkups.)

Caution and care (continued)

INSTALLATION LOCATION AND HANDLING

- Place this unit on the horizontal and stable place. If this unit is used on the unstable place, the unit may be damaged such as removal of the DVD/CD disc.
- Do not place this unit close to other equipment. The equipment and this unit have a bad influence each other and the pictures or audio of this unit may be distorted.
- When a monitor and this unit are placed vertically, the pictures may be distorted or DVD/CD disc may not be ejected.
- Do not let stick your hands into the disc loading slot. You may get your hand caught in the slot and may get injured. If you get your hand caught, do not get out of the slot by force. Contact your dealer after turning off the power and disconnecting the plug.

DVD/CD DISC

- Do not use the disc cracked, deformed or repaired with adhesive. The disc may fly into pieces and cause injury.
- Do not touch the playback surface when holding the disc.
- When dew condensation occurs on the disk, wipe the surface off before use.
- Dirt such as fingerprints or dust causes the deterioration of the picture quality and audio quality. Gently wipe the DVD/CD disc from the centre to the outside with a soft cloth.
- When the disc is very dirty, soak a soft cloth with water and screw water of it, wipe off the dirt lightly, then wipe with a dry cloth.
- Do not use solvent such as benzine and thinner, a record cleaner, and static-stopper. They may damage the disc.
- Do not use the disc described below. They may damage the disk itself or this unit.
Discs on which a piece of paper or sticker is put, or a disk damaged.
Discs which the label is peeled or a disk with oozing
Discs cracked, deformed, or repaired with adhesive
- Store the disc in the specified casing, avoiding the following places.
Places where it will be subjected to direct sunlight.
Places with excessive dust.
Places where it will be subjected to high temperatures or high humidity.
- The movie software on the market or privately recorded picture cannot be played back on this unit. Only the picture recorded on this unit can be played back.

MAINTENANCE OF THE LENS FOR RECORDING/PLAYBACK (LASER PICKUP)

- When any dust adheres on the lens for recording/playback, the image may be distorted or the audio may skip. The normal recording or playback may become impossible. Ask your dealer for cleaning.
The commercial lens cleaning disk may damage the lens. Do not use it.

Caution and care	2-4
Contents	5
How to set the menus	6-9
Setting the menus	6-8
How to set a menu with a mouse	6
How to set a menu with buttons on the unit	6
Displaying a menu screen	7
Closing a menu screen	7
Selecting an item	7
Inputting numbers	8
Setting parameters	8
Symbols in the menu	9
Setting the time and date	10
Time/Date Setting (Setup Menu→System→Time/Date Setting)	10
Using the basic multiplexer functions	11
Basic multiplexer functions	11
Multiplexer buttons	11
Using the cascade function	12
Cascade	12
Controlling the camera	13
PTZ control	13
Recording the picture manually	14
Basic manual recording	14
Setting the recording rate and picture grade for normal recording	14
Playing back the recorded data	15
Basic playback	15
Searching the desired picture	16,17
Basic search	16,17
Search by Time and Date	16
Search by Alarm List	17
Copying the recorded data	18,19
Copy (User Menu→Copy)	18,19
Copy Data to Copy A Drive/Set Copy A Drive ..	18
Copy Data to Copy B Drive/Set Copy B Drive ..	18, 19
Playback software	19
Copying the data of this unit to a video cassette ...	19
Communications by Web Browser	20-27
Communications by Web Browser	20
The personal computer product requirements .	20
Connections	20
Login	20,21
Main Menu	21-27
Live Monitoring	22
Playback	23
Configuration Menu	24-26
User Registration	24,25
Memo & Camera Titles	25
E-mail Setup	25,26
NAS Setup	26
Clock Setup	26
Logout	27
Change Login User	27
Troubleshooting	28,29
Warnings and CALL OUT output	30,31
Warnings and their appropriate countermeasures	30,31

How to read this manual

- **Viewing displays**
 - ➡ (Refer to this information when operating):
Reference information concerning operation
 - ⚠ (Caution required):
Cautionary items concerning operation
- **Finding desired information**
There is a “Contents” at the beginning of this manual.
- **Troubleshooting**
Read Troubleshooting (pages 28, 29) for possible remedies to the problem.

Microsoft is either registered trademarks or trademarks of Microsoft Corporation in the United States and/or other countries.

How to set the menus

■ Setting the menu

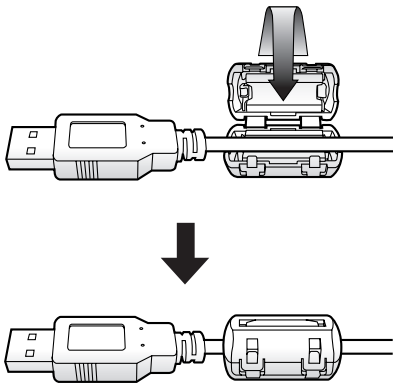
The operational conditions of this unit can be set in the menu screens. You can select and set the operational conditions by using the buttons on the front panel or the mouse connected to this unit. In the menu screen, the numbers 1 to 16 (camera number buttons) and alphabets A to E (SPLIT screen buttons) show the button names on the front panel.



- When OUTPUT B is selected, the cursor of the mouse is displayed, however, the menu screen is not displayed and cannot be set. The menus can be set only when the OUTPUT A is selected.

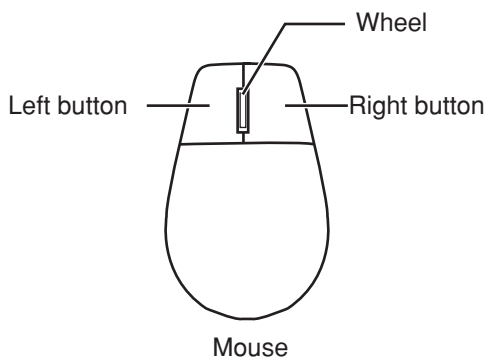
◆ How to set a menu with a mouse

• Setting a mouse



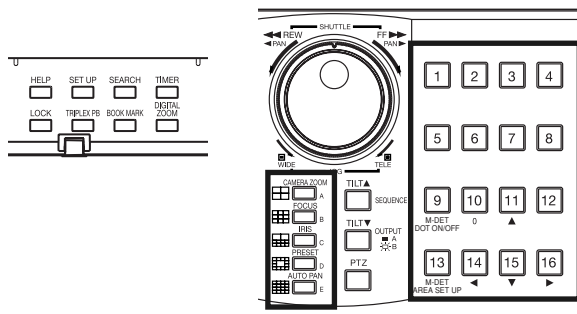
- step1.** Attach the supplied ferrite core to the cable of the mouse as illustrated to the left.

• Setting a menu with a mouse



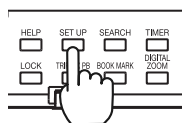
- step1.** Use the left and right buttons to set the menu.
- Click the left button to open the menu or select a desired item, etc.
 - Click the right button to select the active area for motion detection.
 - With this unit, the wheel on a mouse is not available.

◆ How to set a menu with buttons on the unit

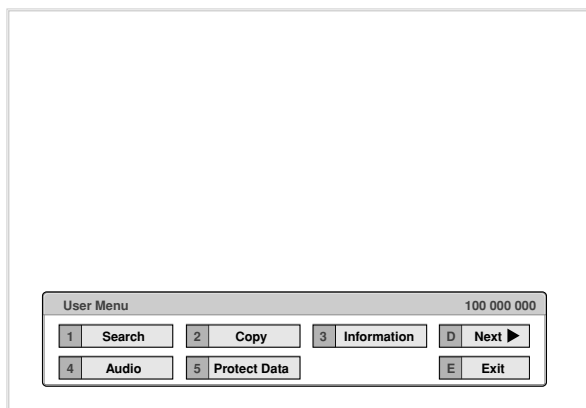


- step1.** Use the SET UP button, camera number buttons, and the SPLIT screen buttons (A to E) to set the menu.
- Press the SET UP button to open the menu screen.
 - Press the camera number buttons (1 to 16) and the SPLIT screen buttons (A to E) to open each menu or select the desired item.

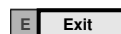
◆ Displaying a menu screen



- step 1.** Press the SET UP button or click the left button on the mouse to display a menu.
- The <User Menu> appears.
 - To open other menu, press the D button or left-click on “Next ▶.”

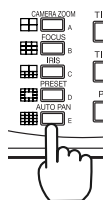


- When you use a mouse, click the following area to operate.



Click this area

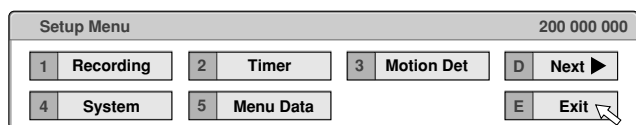
◆ Closing a menu screen



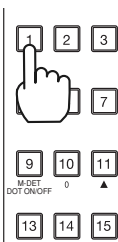
- step 1.** Press the E button or left-click on the “Exit” to close the menu.



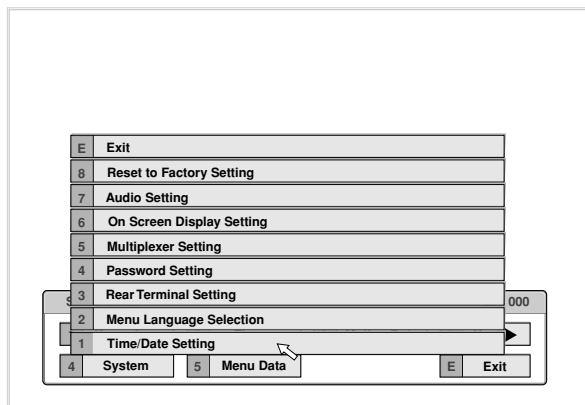
- You cannot close the menu by pressing the SET UP button on the unit.



◆ Selecting an item

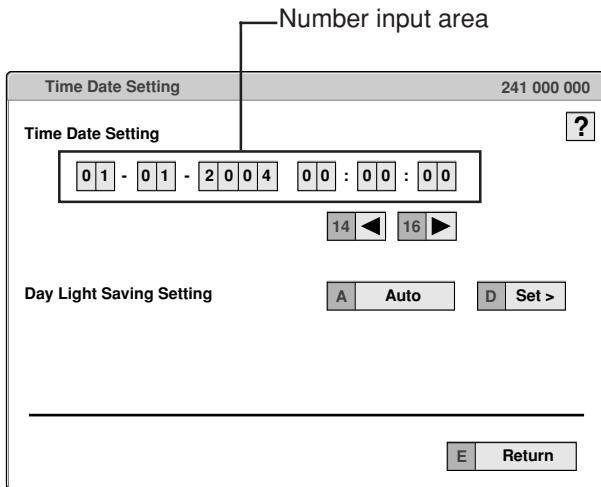


- step 1.** Press the button of the desired item or left-click on the desired item.
- The desired item menu opens.
 - Select an item and press the number or click on the menu to open the item.



How to set the menus (continued)

◆ Inputting numbers



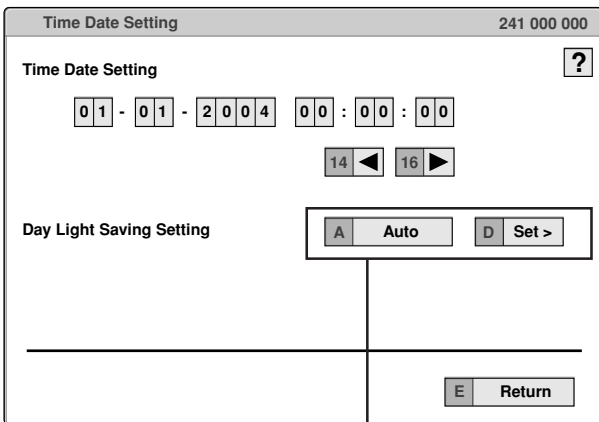
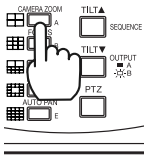
When you use the buttons on the unit,

- step1. The number displayed in red can be input. Press the camera number buttons (0 to 9) you desire to input.
- step2. To move to the next input area, press the 16 button.
To go back to the previous area, press the 14 button.

When you use a mouse,

- step1. Left-click on the number in red until the desired number appears.
To move the area, left-click on the input area you desire to set or left-click ◀ or ▶.

◆ Setting parameters



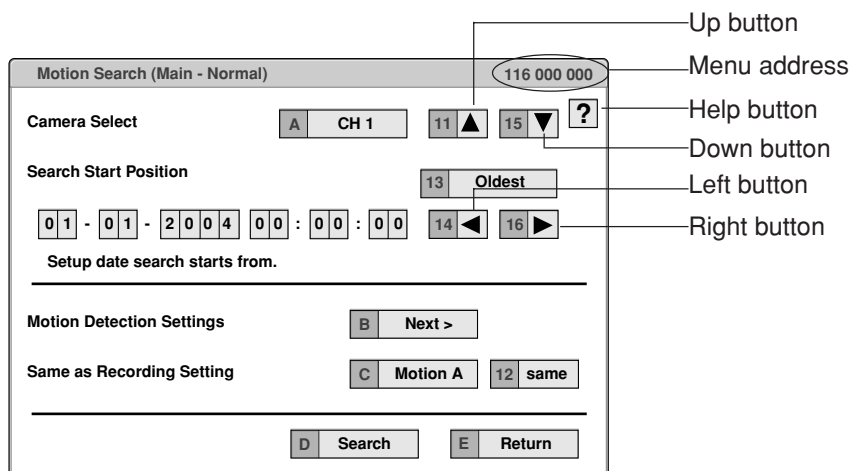
Setting or selecting area

- step1. Press the A button or left-click on the parameter box until the item to be set appears.
- step2. For some item, more detailed setting is required. In this case, an item such as “D(Set >)” is displayed. If necessary, press the D button or left-click on the “Set >” to set more details.



- When you close the menu, press the E button or left click on “Return” or “Exit.”
- You cannot close the menu by pressing the SET UP button on the unit.

■ Symbols in the menus



Some symbols appear in the menu screens. The meanings are follows.

- ? (Help) When you press the HELP button or click this symbol, the detailed information on the menu appears.
- ◀ (Left) When you press the 14 button or click this symbol, the item to be set shifts to left.
- ▶ (Right) When you press the 16 button or click this symbol, the item to be set shifts to right.
- ▲ (Up) When you press the 11 button or click this symbol, the value of selected item increases.
- ▼ (Down) When you press the 15 button or click this symbol, the value of selected item decreases.

Menu address The menu address is put on each menu. You can open the menu by inputting the menu address with the buttons on the unit.

For example, when opening the <Motion Search> menu, press the SET UP button and then press the camera number button in the order of 1, 6.

Setting the time and date

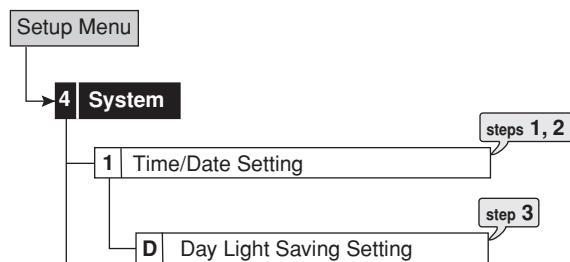
■ Time/Date Setting (Setup Menu → System → Time/Date Setting)

This item is used to set the present date, time, and auto daylight saving setting. Auto daylight saving function is used to automatically gain the clock of the unit an hour for the specified time period.

In <Day Light Saving Setting>, start/end time of the auto daylight saving function can be checked and changed.



- Before you start recording, accurately set the present date and time.
- The recording and playback are not performed correctly when the clock of this unit does not run. Check that the clock of this unit running before operation.



step1. Set the present date, month, year, hour, minute, and second.

step2. Select the desired setting for daylight saving.
Auto: Automatically gains the clock of the unit for the time period set in the <Day Light Saving Setting>.
Off: Does not activate the auto daylight saving function.

step3. When setting “Auto” for “Day Light Saving Setting,” set the day of the week, month, hour and minute of start/end time for the auto daylight saving function.

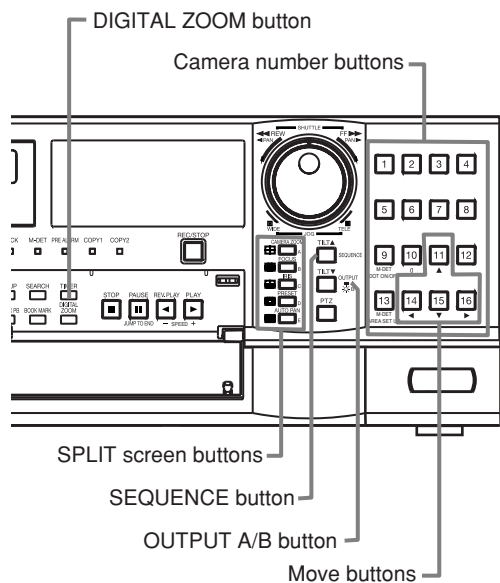


- The time is indicated using the 24-hour system.
- This unit uses 4 digits to display the year. The available display range is 37 years between 1/1/2001 to 31/12/2037. The unit is also equipped with a function to automatically calculate leap years. The year returns to 2001 after 31/12/2037.

Using the basic multiplexer functions

Basic multiplexer functions

This function is used to perform the multiplexer functions using the buttons on the front panel.



- The sequential display is cancelled when the different type of the split screen is displayed.
- Pressing the OUTPUT A/B button on the front panel switches the multiplexer output of the unit. When OUTPUT A is selected, the light of the button turns off. When OUTPUT B is selected, the button lights up and camera number buttons, SPLIT screen buttons, and SEQUENCE button are operated for the monitor screen connected to the OUTPUT B connector. Pressing the OUTPUT A/B button again switches the multiplexer output to OUTPUT A.

4. DIGITAL ZOOM button

Displays magnification 100% screen when pressing this button during single screen display. At this time, the magnification centre point (X) appears at the centre of the screen. Pressing the button again switches the magnification to 200%, and then 400%. By pressing the MOVE buttons, the centre point moves vertically or horizontally.

When the DIGITAL ZOOM button is pressed, camera number buttons 11, 14, 15, and 16 become the MOVE buttons.

Multiplexer buttons

1. Camera number buttons (1 to 16)

Displays the picture supplied from the cameras connected to CAMERA IN terminals 1 to 16 on the rear panel in the single screen display.



- Pictures can be displayed even if the camera is not set for recording.

2. SPLIT screen buttons

Displays the split screen in the following order.

SPLIT4 (田) button : SPLIT 4a→SPLIT 4b→
SPLIT 4c→SPLIT 4d→SPLIT 4a
→•••

SPLIT9 (田) button : SPLIT 9a→SPLIT 9b→
SPLIT 9a→•••

SPLIT10 (田) button : SPLIT 10a→SPLIT 10b→
SPLIT 10a→•••

SPLIT13 (田) button : SPLIT 13a→SPLIT 13b→
SPLIT 13a→•••

SPLIT16 (田) button : SPLIT 16 screen

3. SEQUENCE button

Displays the sequential screen in the split screen or the single screen display. Make the detailed settings of this display in the <Multiplexer Setting> (Setup Menu → System→Multiplexer Setting). Sequential display does not appear during playback.

Using the cascade function

■ Cascade

This function is used to observe the pictures supplied from the camera connected up to 16 DX-TL5000E via one monitor. The multiplexer function of all the connected DX-TL5000E and PTZ of all the connected cameras can be controlled by the master recorder.



- Before using the cascade function, check the following:
 - The recorders are connected via the RS-485 terminal. Cascade connection for audio and video is made.
 - The password lock of level 2 or higher is turned on for the slave recorders.
 - The ID number of the master recorder is set to 01 and that of the slave recorders are set to any number from 02 to 16.

step1. Press the PTZ button for more than 2 seconds.

- The unit switches to the cascade mode.
- On the slave recorder, the status of the cascade mode is shown on the LCD display.

During cascade mode (during connecting):

```
01-01-2004 00:00:00
CASCADE ON
```

During cascade standby mode:

```
01-01-2004 00:00:00
CASCADE MODE
```

step2. Press the camera number button corresponding to the ID number of the slave recorder to be controlled.

- Press the camera number button within 3 seconds of switching the unit to the cascade mode.
- The picture from the selected recorder is displayed on the monitor connected to the VIDEO CASCADE OUT terminal of the master recorder. By using the buttons of the master recorder, the multiplexer function of the slave recorder can be operated. And also by operating PTZ of the master recorder, the camera connected to the slave recorder can be controlled.
- The ID number of the slave recorder controlled appears on the LCD display on the front panel of the master recorder.

```
01-01-2004 00:00:00
CASCADE ID02
```

It is also displayed on the monitor screen.

step3. To control the other recorder, repeat steps 1 and 2 above.

- Press the PTZ button for more than 2 seconds to cancel the operation of the slave recorder and displays the picture supplied from the camera connected to the master recorder again.



- During cascade mode, the picture from the slave recorder is displayed on the monitor connected to VIDEO CASCADE OUT connector of the master recorder.
- The cascade function of audio is available when attaching the optional audio interface board DX-SC5.

■ PTZ control

This function is used to control the cameras connected via RS-232C or RS-422/485 terminal.

step1. Press the camera number button to be controlled and display the picture in the single screen display.

step2. Press the PTZ button.

- The unit switches to PTZ mode and the button lights up. "PTZ" appears on the LCD display on the front panel during PTZ mode.

```
01-01-2004 00:00:00
PTZ
```

- The camera number to be controlled appears on the LCD display on the front panel.

```
01-01-2004 00:00:00
PTZ CAM1
```

step3. Control the camera.

Tilt: Press the TILT ▲ button to tilt the camera in the upward direction. Press the TILT ▼ button to tilt the camera in the downward direction.

Pan: Turn the SHUTTLE ring to the right to pan the camera in the rightward direction. Turn the SHUTTLE ring to the left to pan the camera in the leftward direction.

Camera zoom: Press the CAMERA ZOOM button and then turn the JOG dial to the left (wide) or right (tele) to adjust the camera zoom.

Focus: Press the FOCUS button and then turn the JOG dial to the left (far) or right (near) to adjust the focus of a camera.

Iris: Press the IRIS button and then turn the JOG dial to the left (close) or right (open) to adjust the iris of a camera.

Preset: Press the PRESET button and then press the camera number buttons within 3 seconds to preset the watching points. Up to 16 points can be set.

Auto pan: Press the AUTO PAN button to activate auto pan within the range between the preset watching points 1 and 2.

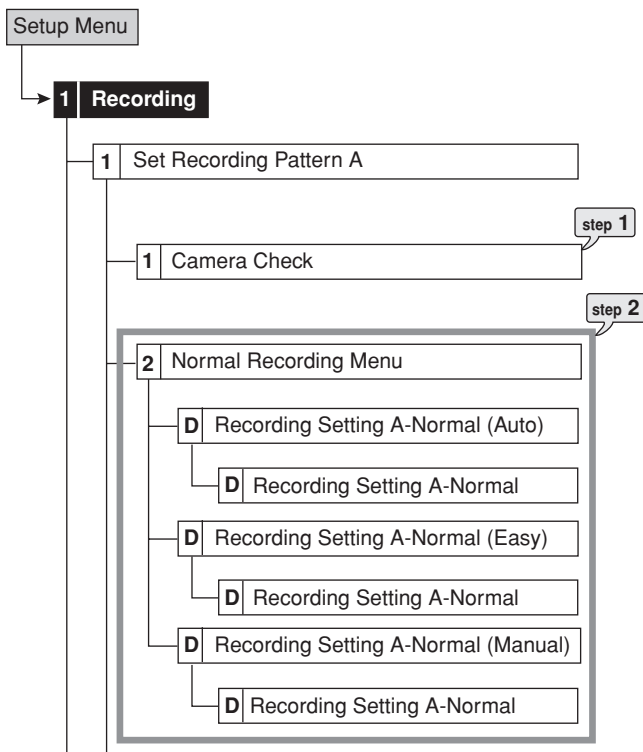
Recording the picture manually

■ Basic manual recording

This function is used to start recording manually. Before you start recording, check the repeat recording settings in the <Data Management Setting for Main Memory> (System Menu → Memory → Data Management Setting for Main Memory) first, and then make the recording settings.



- Make the manual recording settings on the <Set Recording Pattern A> (Setup Menu → Recording → Set Recording Pattern A).
- Only <Set Recording Pattern A> can be used for the manual recording. <Set Recording Pattern B> to <Set Recording Pattern D> are used for timer recording only. <Set Recording Pattern A> can be used for both manual and timer recordings.
- Settings here are for manual recording only. For timer recording, settings must be made on the <Timer> menu (Setup Menu → Timer).



◆ Setting the recording rate and picture grade for normal recording

step1. Execute camera check.

- The unit detects the camera number with the video signal input automatically when selecting “Execute.” The setting here applies to the Auto and Easy settings in step 2.



- After executing the camera check, the recording settings are made only for the camera numbers with the video signal input when using auto or easy setting.

step2. Set the recording setting method and its detailed settings.

Auto: Automatically sets the picture grade and the recording rate by setting the recording cycle and the recording hour per day. Set the desired settings and then select “Execute.”

- The preview screen appears automatically when the auto setting is executed.

Easy: Sets the frame or field recording, recording rate, and picture grade for normal recording to the same settings for all the camera numbers. When the recording rate is set to “— — —” for all the camera numbers, normal recording is not performed. Set the desired settings and then select “Execute.”

- The preview screen appears automatically when the easy setting is executed.

Manual: Sets the frame or field recording, recording rate, and picture grade for normal recording individually for each camera number. When setting “— — —” for the recording rate, the recording does not perform for that camera number.

- Display the preview screen to check the settings you have set.



- When setting the frame recording, the recording rate display in the preview screen turns green.
- The recording rate display in the preview screen turns red when the value exceeds 200 pps in total.

<Estimated Recording Time>

- The estimated recordable time is displayed on the bottom of the preview screen depending on the picture grade and the recording rate settings for normal recording. (The time does not change when changing the alarm recording settings.)
- When the main device is partitioned, <Estimated Recording Time> shows the estimated recordable time for normal recording.

step3. Press the REC/STOP button.

- The REC/STOP button lights up and recording starts.

step4. To stop recording, press the REC/STOP button for more than 2 seconds.

- Recording stops and the light turns off.



Playing back the recorded data

■ Basic playback

This function is used to playback the recorded data. This unit allows recorded data to be played back using various methods. The basic playback described here is the most common method for playback.

- step1.** Press the PLAY button inside of the front door.
- Playback starts.
 - After turning the power on, the oldest recorded data is played back first. Otherwise, playback resumes at the stopped position of the previous playback.



- ⓘ
- When the “Playback Device Repeat Setting” (System Menu→ Memory→ Recording Data Readout Setting) is set to “Repeat Off,” playback stops when reaching the physical end of the HDD or end point of the recorded section. When the “Playback Device Repeat Setting” is set to “Repeat On,” recorded data is played back repeatedly.

(To change the playback device:)

- step2-1.** Select the playback device and playback area in the <Select Source Device> (User Menu → Search→Select Source Device).

Main: Plays back the recorded contents of the main device.

Normal: Normal recording area

Alarm: Alarm recording area

LPA: Long pre-alarm recording area

Copy A: Plays back the recorded contents of the copy A device.

Group1, 2, 3, 4, 5

Copy B: Plays back the recorded contents of the copy B device.

Group1, 2, 3, 4

- ⓘ
- “Alarm” appears when “Alarm Recording Area” (System Menu→Memory→Data Management Setting for Main Memory→Change Partition Setting) is set to other than “0 %.”
 - “LPA” appears when “Long Pre-Alarm Area” (System Menu→Memory→Data Management Setting for Main Memory→Change Partition Setting) is set to other than “0 %.”

- step2-2.** Press the PLAY button.
- Playback of the selected device starts.

- ⓘ
- When pressing the PAUSE/JUMP TO END button during the playback is stopped, the still frame playback picture of the end point of the latest recording is displayed.

- step3.** To pause playback, press the PAUSE button.
- To resume playback, press the PAUSE button again or press the PLAY button.

- step4.** To stop playback, press the STOP button.
- When executing playback again, the playback starts from the stopped position of the previous playback.

- ⓘ
- Pressing the OUTPUT A/B button on the front panel switches the multiplexer output of the unit. When OUTPUT A is selected, the light of the button turns off. When OUTPUT B is selected, the button lights up and the buttons related to playback function are operated for the monitor screen connected to the OUTPUT B connector. Pressing the OUTPUT A/B button again switches the multiplexer output to OUTPUT A.
 - The playback of each camera may not be executed at a constant speed depending on the recorded condition.
 - During the split screen display, the playback may be executed at the pps which is lower than the one used for recording.
 - When playing back on both OUTPUT A and B, the playback speed may become slower.

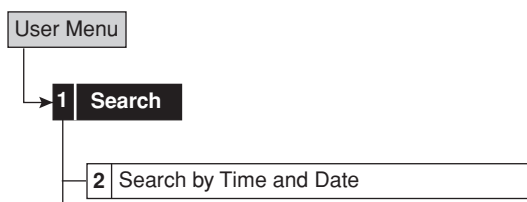
Searching the desired picture

■ Basic search

This function is used to search the start point of the desired picture. This unit equipped with 5 search functions (Search by Time and Date, Search by Alarm List, Find data storage location, Search by Book Mark, and Search by Motion). In this section, the common search methods, search by time and date and search by alarm list, are described.

◆ Search by Time and Date

This item is used to search the picture by specifying date, hour, minute, second, and camera number to be searched. The search result is displayed in still frame playback. When searching for 1 camera number, the search result is displayed in the single screen display. When searching for 2 or more camera numbers, it is displayed in SPLIT16 screen.



- step1. When you set the time and date to be searched manually, select “Manual” and then set the date, hour, minute, second, and camera number.
- step2. Select “Search.”
- step3. When you search the start and end points of recording, select “Start” and “End” respectively.
- step4. To playback the searched picture, press either the PLAY button or the PAUSE button.
- step5. To stop playback or still frame playback, press the STOP button.



- To change the device to be searched, set the desired device in the <Select Source Device> (User Menu→Search→Select Source Device).
- To display the single screen display of the desired camera number when the search result is displayed in the SPLIT16 screen, press the desired camera number button.

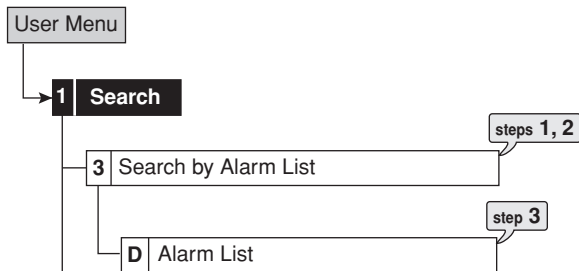


- When there is no recording of the set time, the picture of the closest time and date for the set camera number is displayed in still frame.
- When the multiple recorded data of the same date and time are existed, execute search by time and date more than once until the desired picture is searched.
- Depending on the recording condition, search by time and date function may not operate correctly.

- When changing the display from single to split or from split to single during still frame playback, the recorded picture may not be existed at a neighbourhood of that point or picture may not be displayed depending on the selected camera number or timing of displaying the still frame playback picture.

◆ Search by Alarm List

This unit stores the start time of alarm recording and emergency recording in the alarm list when such recording begins. This item is used to search the desired picture using the list of alarm recording (emergency recording). The search result displays in still frame playback of the single screen display.



step1. Set the date, hour, minute, second, and sensor number to be searched.

Latest: Displays the date and time of the latest recording.

step2. Select "Alarm List."



- The alarm list may take time to be displayed completely when there are many list items or the HDD has been added.

step3. Select the alarm list you want to display.



- To change the device to be searched, set the desired device in the <Select Source Device> (User Menu→Search→Select Source Device).

When executing alarm list search while the "Alarm area" and "Long pre-alarm area" are set, set the playback area to "Alarm" and "LPA" respectively.

- "Sensor" display indicates the sensor number of which the alarm signal is input.
- When the repeat recording setting for "Normal Recording Area" or "Alarm Recording Area" (System Menu →Memory→Data Management Setting for Main Memory) is set to "Repeat Off" and there is an alarm recording (emergency recording) at the end of the HDD, that recording may not be stored in the alarm list and that item may be missed.



- When the detection of the motion or the ground of the ALARM IN terminal occurs numerously at the same time, not all the start times of the alarm recording may be registered in the alarm list. In this case, the sensor of the lowest number is registered in the list.
- In the alarm list, items with the ALARM IN terminal grounded are indicated in orange, items that were detected with motion are indicated in white, items with the EMERGENCY terminal grounded are indicated in magenta, and items that were input with alarm signal via communication are indicated in green.
- To clear the alarm list, erase the HDD data of which the alarm recording is recorded (System Menu →Data Clear). Beware that executing it erases all the data of the HDD contained the picture data.

- Alarm list search is not performed if there are no index signals.
- When an alarm recording (emergency recording) is started while displaying the <Alarm List>, exit the <Alarm List> once and then display it again. The new item will be added to the list.

Copying the recorded data

■ Copy (User Menu→Copy)

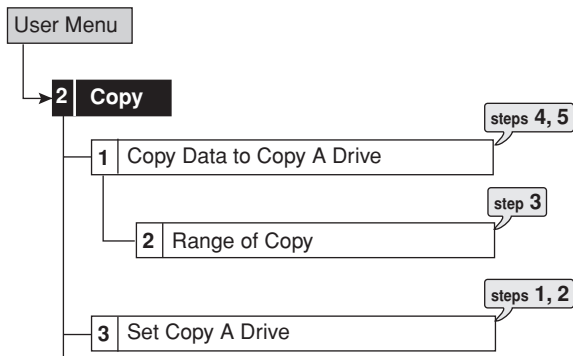
This item is used to copy the data in the main device to the copy device.

◆ Copy Data to Copy A Drive/Set Copy A Drive

This item is used to copy the data by specifying the start and end points of copying. The points are specified by the date and time or the book mark. This function is useful for copying the data of the short period of time.



- Before executing the copy, make sure that the Copy A device is connected and set in the <Add/Remove HDD Device> and <Add/Remove DVD/CD Drive> (System Menu→Memory) correctly.



- step1.** Set the camera number to be copied.
- The button function changes between “All Off” and “All On” each time you select this button. You can switch on and off for all the cameras easily by using this button.
 - The picture is not copied when there is no recorded picture of the set camera number or time.
- step2.** Select “Other settings” and then set the detailed settings.
- From:** Sets the area which contains the data to be copied. The available setting items are “Normal,” “Alarm,” and “LPA.”
- To:** Sets the group number to which the data is copied. The available setting items are “Group 1” to “Group 5.”
- Copy Data:** Sets the data to be copied. The available setting items are “Alarm” and “All.”
- Overwrite:** Selects whether to overwrite the existed data or not.
- Auto Eject:** Selects whether to eject media automatically when the copy is over.



- “Alarm” appears for “From” and “Copy Data” when “Alarm Recording Area” (System Menu→Memory→Data Management Setting for Main Memory→Change Partition Setting) is set to other than “0 %.”
- “LPA” appears for “From” when “Long Pre-Alarm Area” (System Menu→Memory→Data Management Setting for Main Memory→Change Partition Setting) is set to other than “0 %.”

- When copying the data to DVD and setting “Overwrite” to “On,” the unit clears the existed data of the disk before overwriting the data. Note that clearing the data takes about 30 to 40 minutes.

step3. Set the start, start/end, or end points of the copy by specifying the date and time or the book mark.

- Start:** Sets only the start point of the copy.
- Start/End:** Sets the start and end points of the copy.
- End:** Sets only the end point of the copy.

- To set the point using the book mark, select “Bookmark” and then select the desired book mark number.
- To copy the oldest recorded time, select “Copy Start Time.” To copy the latest recorded time, select “Copy End Time.”

step4. Select “Calculate” to calculate the capacity of the data to be copied.



- When using “End,” the copy cannot be executed unless the calculation of the capacity of the data to be copied is completed.
- When using “Start” or “Start/End” and executing the copy without calculating the capacity of the data to be copied, the progress or the time of the copy may not be displayed correctly because the unit cannot specify the capacity of the data to be copied.

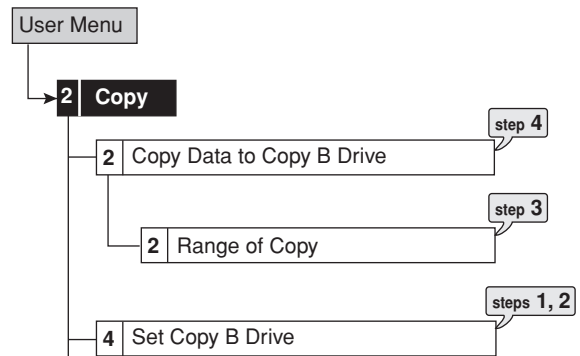
- step5.** Select “Execute.”
- The copy starts.
 - To stop the copy manually, select “Cancel” in the progress screen. The data which has been copied before cancelling is copied.

◆ Copy Data to Copy B Drive/Set Copy B Drive

This item is used to copy the data by specifying only the start point of copying. The point is specified by the date and time. The copy continues until the end point of the recorded data reaches or the media to be copied becomes full unless the copy is stopped manually (when “FIFO Overwrite” is set to “Off”). This function is useful for making backup of the recorded data.



- Before executing the copy, make sure that the Copy B device is connected and set in the <Add/Remove HDD Device> and <Add/Remove DVD/CD Drive> (System Menu→Memory) correctly.



- step1.** Set the camera number to be copied.
- The button function changes between “All Off” and “All On” each time you select this button. You can switch on and off for all the cameras easily by using this button.
 - The picture is not copied when there is no recorded picture of the set camera number or time.

- step2.** Select “Other settings” and then set the detailed settings.

From: Sets the area which contains the data to be copied. The available setting items are “Normal,” “Alarm,” and “LPA.”

To: Sets the group number to which the data is copied. The available setting items are “Group 1” to “Group 4.”

Copy Data: Sets the data to be copied. The available setting items are “Alarm” and “All.”

Overwrite: Selects whether to overwrite the existed data or not.

Auto Eject: Selects whether to eject media automatically when the copy is over.

FIFO Overwrite: Selects whether to repeat copying from the start point of the media by overwriting the existed data, or to stop copying when the capacity of the media becomes full during copying. This setting is available only when the copy destination is HDD or NAS.



- “Alarm” appears for “From” and “Copy Data” when “Alarm Recording Area” (System Menu→Memory→Data Management Setting for Main Memory→Change Partition Setting) is set to other than “0 %.”
- “LPA” appears for “From” when “Long Pre-Alarm Area” (System Menu→Memory→Data Management Setting for Main Memory→Change Partition Setting) is set to other than “0 %.”
- When copying the data to DVD and setting “Overwrite” to “On,” the unit clears the existed data of the disk before overwriting the data. Note that clearing the data takes about 30 to 40 minutes.

- step3.** Set the start time of the copy.

Start: Sets the start point of the copy.

Continue: Starts copying from the end point of the previous copy.

- To set the start point using the book mark, select “Bookmark” and then select the desired book mark number.
- To copy the oldest recorded time, select “Copy Start Time.”

- step4.** Select “Execute.”

- The copy starts.
- To stop the copy manually, select “Cancel” in the screen of <Copy Data to Copy B Drive>. The data which has been copied before cancelling is copied.



- The warning is displayed when the copied range exceeds the available capacity of the device to be copied when “FIFO Overwrite” is set to “Off” and copy destination is HDD. In this case, set the copy setting again with narrower copy range or set the copy device of larger capacity.

- When the copy is performed during recording, the picture of the recording start and end points may not be recorded.



- The progress bar of the copy is not displayed for copy B.
- The picture data is administrated in 2 MB unit. Therefore the data is copied in 2 MB unit from the start point of the designated range when copying.

■ Playback software

When copying the data to the CD/DVD or memory disc, the software is copied automatically in order to playback that data on the personal computer.

■ Copying the data of this unit to a video cassette

This function is used to copy the data of this unit to a video cassette using an analogue video cassette recorder. Data can be copied even when the unit is in recording mode. For the recording operation, see the instruction manual for the analogue video cassette recorder used.

- step1.** [Analogue video cassette recorder] Prepare the VCR for recording.

- Set the input source of the VCR to the external input which is connected to this unit.

- step2.** [This unit] Press the SPLIT screen buttons or SEQUENCE button to select the screen type to be played back.

- step3.** [This unit] Use the search function to display the start position of the copy.

- step4.** [Analogue video cassette recorder] Start recording.

- step5.** [This unit] Press the PLAY button to start playback.

- step6.** To stop copying, press the STOP button on this unit first. And then, stop the recording on the analogue video cassette recorder.



- Only the picture displayed on the screen can be copied to the video cassette.

Communications by Web Browser

■ Communications by Web Browser

The Web browser on the personal computer can capture the pictures that have been recorded and live pictures from the camera that is connected to this recorder. Also, some of the recorder settings can be made via the personal computer.

◆ The personal computer product requirements

- OS: Microsoft Windows 98SE, Windows 2000, Windows Me or Windows XP.
- CPU: IBM PC/AT compatible with an Intel Pentium series processor of at least 500 MHz.
- RAM: 256 MB or more.
- Hard disk drive: System drive with unused space of at least 200 MB.
- Web Browser Soft: Microsoft Internet Explorer 5.5 or later.
- Display device: XGA (1024 pixels x 768 pixels) or higher.



- Microsoft and Windows are registered trademarks of the Microsoft Corporation in the US and other regions. (The official name of Windows is Microsoft Windows Operating System.)

All other company and product names appearing herein are the property of their respective owners.

- Windows 98SE is an abbreviation of Microsoft Windows 98 Second Edition.
- Windows 2000 is an abbreviation of Microsoft Windows 2000 Professional.
- Windows Me is an abbreviation of Microsoft Windows Millennium Edition.
- Windows XP is an abbreviation of Microsoft Windows XP Home Edition/Professional.



- The product requirement described above cannot guarantee operations in all environments.
- Lack of compatibility between Web functions and the PC peripheral driver may, in rare instances, result in abnormal operation. If this happens, upgrade to the newest version of Internet Explorer and try again.

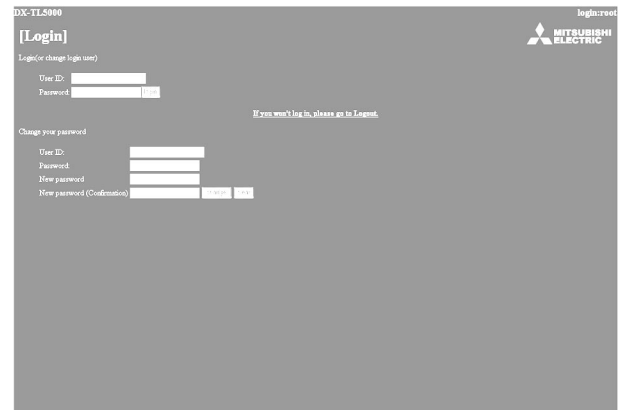
◆ Connections

- When making a direct connection between this unit and a personal computer (hereinafter PC), use a cross cable, and when making a connection through a HUB, use a straight cable.
- Refer to the PC instruction manual for instructions on how to set the Web settings on the PC.

■ Login

Start up the Microsoft Internet Explorer and log in.

1. Start up the Microsoft Internet Explorer and enter the address.
 - The “[Login]” screen appears.



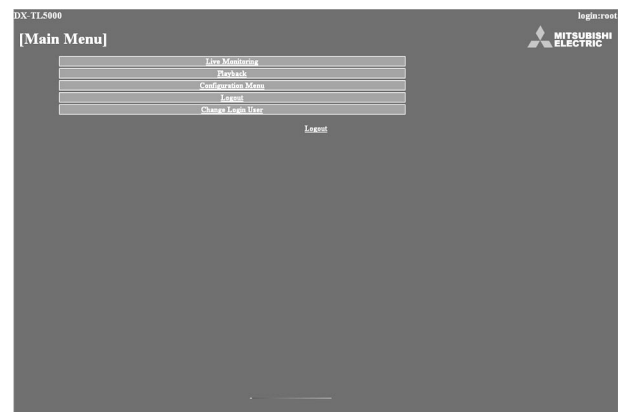
- 2-1. (When logging in •••)

First, enter the “User ID” and the “Password.” When shipped from the factory, the user ID for the full-rights user is “**root**,” and the password is “**admin000**,” the user ID for the live user is “**guest**” and the password is “**guest**.”



- More than one user can log in simultaneously using the same user ID and password.
- However, there are restrictions due to authorization. The maximum number of users that can be connected at the same time is 10.

- 2-2. Select “login” and then left-click or press ENTER.
 - The “[Main Menu]” screen appears.



3-1. (If you make an error in entering the user ID or password •••)

- The “[Caution]” screen appears.

3-2. Select “Login” and either left-click or press ENTER.

- The “[Login]” screen appears.

3-3. Follow the steps in step 2-1 and enter the correct “User ID” and “Password.”

4-1. (If you do not log in •••)

Select “If you won’t log in, please go to Logout.” and left-click.

4-2. The message “Session ID removed from recorder & browser. Please close the browser.” will display. Close the Web Browser.

5-1. (To change password •••)

The password can be changed in the “[Login]” screen only by the user who has the authorization to change a password. Follow the instructions in the menu and enter the current “User ID” and “Password.”

5-2. Enter the new password in “New password” and again in “New password (Confirmation).”



- The number of characters that can be used in registering a password is 16. Both alphabet letters and numbers can be used with a distinction made between upper and lower case. You cannot use spaces.

5-3. To change into a new password, select “change” and left-click or press ENTER. To cancel the change, select “clear,” and left-click or press ENTER.

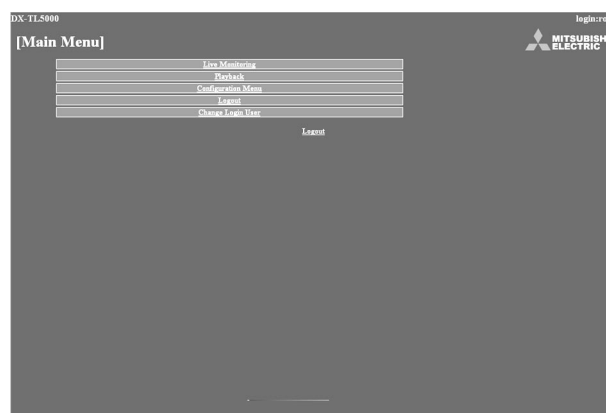
■ Main Menu

This is the screen for selecting, from “Main menu,” “Live Monitoring” with which live pictures will be retrieved and displayed, “Playback” with which pictures that have already been recorded will be retrieved and displayed, “Configuration Menu” with which some of the settings of the recorder will be made, “Logout” for ending a job, or “Change Login User” for making a change in the logged-in user.



- Depending on what the user’s authorization is, there are certain menus that cannot be selected.
- The transfer rate at communication changes depending on the communication environment or unit’s status. For the stable communication, use this unit with the proper picture transfer speed suitable to the conditions.
- The user’s session ID (connection data) will be lost in 5 minutes from the final operation that includes picture retrievals. If no operations are made within that 5 minutes, no other operations can be made after that so close the browser and then log in again.
- If the unit’s MAIN switch is “OFF,” live and recorded pictures cannot be retrieved.

1. Select the desired menu from “Main Menu” and left-click.



Communications by Web Browser (continued)

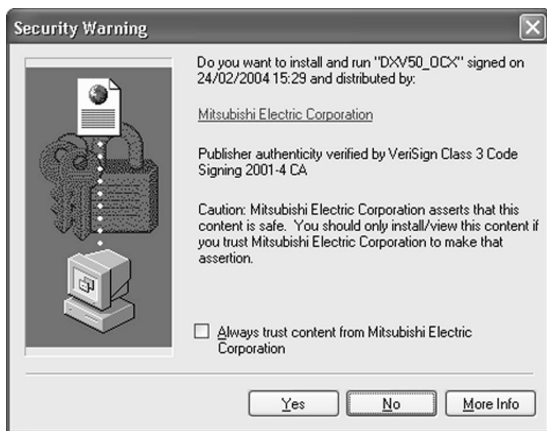
◆ Live Monitoring

Retrieves live pictures and displays the pictures on the PC screen.

1. Select "Live Monitoring" and left-click.
 - The "[Live]" screen appears.



- When picture acquisition is tried for the first time with the Web browser of a personal computer, a message as shown below will be displayed. Please click "Yes."



- When the unit is recording at the full rate (200 pps), the picture supplied from the camera which is not used for recording at that time is not updated.



<Function description>

- STOP : Stops the retrieval of an picture.
- GO : Starts (or restarts) the retrieval of an picture.
- Display : For selecting either the display or non-display of a camera number.
- Layout : For selecting from the 12 types of display patterns. (default: 4(1-4) screen)
- Camera : Selects the camera number that you want to display and check.
- Transfer Rate : Selects one of 5 stages from "Lo" to "Hi" for picture retrieval speed. (default: middle)
- Save Layout : The layout of the screen display is registered to "Local PC."
- Main Menu : Returns to the "Main Menu."
- Logout : For logging out.

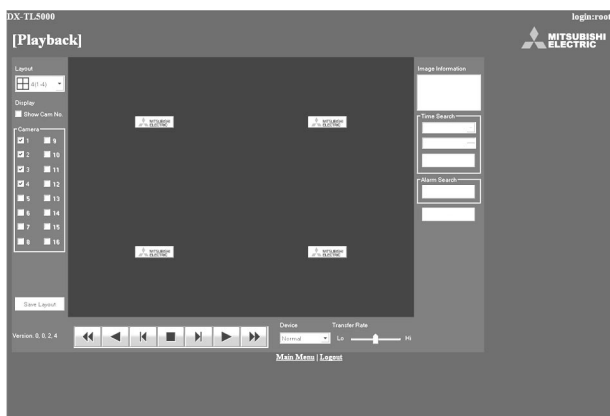


- The sequence in which camera numbers have been selected is displayed from the top left.
- Setting "Transfer Rate" too far on "Hi" may present obstacles to PC operation as determined by the performance of the PC you are using. Please set it to the appropriate rate to the picture retrieval speed of your machine.
- Depending on the network capacity and the load conditions, the transfer rate may not rise.

◆ Playback

Retrieves, plays back and searches for pictures that have been recorded by the recorder.

1. Select "Playback" and left-click.
 - The "[Playback]" screen appears.



2. Press the ► button to start playback.

<Function description>

- : Press to start playback.
- : Press to start speed search in the forward direction at speeds of x2, x4, x8 and x16.
- | : Press to frame-by-frame playback in the forward direction.
- ◄ : Press to start reverse playback.
- ◄◄ : Press to start speed searches in the reverse direction at speeds of x2, x4, x8 and x16.
- ◄| : Press to frame-by-frame playback in the reverse direction.
- : During playback or searching, press to stop playback for still frame.

Device : Selects the HDD for playback and search.
(default: Normal)

- The following searches can be selected in single-screen display.



The date, time, and the camera number for the picture acquired are displayed in "Image Information." Clicking "Save Image" stores the picture that is freeze-frame displayed in the PC in bit map format.



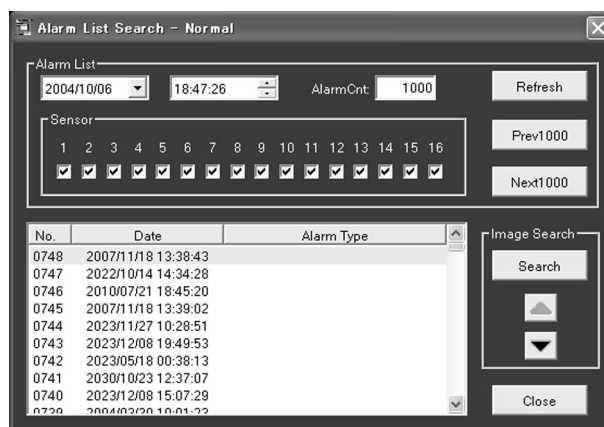
- The function of searching for recorded picture data is effective only when the single-screen display has been selected in the "Playback" menu. The function cannot operate during picture data playback so to make a search of any type first stop the playback.

• Time Search

Select the date and time and click "Search."

• Alarm List Search

Click "Alarm List" and the "Alarm List Search" screen will appear in the sub-screen.



1. Set the desired date/time and number of alarm list items to be acquired, and then click "Refresh" to acquire the alarm list.
 - The alarm list cannot be acquired without clicking "Refresh."
 - Enter the desired number of alarm list items to be acquired in "Alarm Cnt." When setting the large number in "Alarm Cnt.," it may take a long time to acquire the list or the desired number of list items may not be acquired depending on the recording condition.
2. Select the "No." desired, and then click "Search."
 - Click "Prev(number)" for a search in the reverse direction and click "Next(number)" for a search in the forward direction.

Click "Refresh" again to re-acquire the "Alarm List," and click "Close" to hide the "Alarm List Search" menu.

Sensor : Check the desired sensor number to acquire the alarm list items.

• Image Search

Click ▲ to display the picture of the next alarm list item.

Click ▼ to display the picture of the previous alarm list item.

◆ Configuration Menu

This is the screen for making some of the recorder settings.

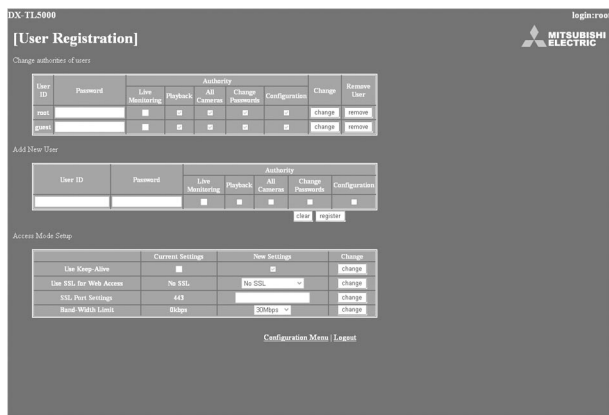
1. Select “Configuration Menu” in the “Main Menu” screen.
 - The “[Configuration Menu]” screen appears.



2. Select the desired “Configuration Menu” and left-click.
 - **User Registration**

This is the screen for changing the settings for registered user authorization and for deleting a registration. It can also be used for registering new users.

1. Select “User Registration” and left-click.
 - The “[User Registration]” screen appears.



- 2-1. (To change registered user settings •••)

Select the user ID for changing the settings in the “Change authorities of users” settings.

- Select the items that you want to change.

<Authority>

- Live Monitoring** : Allows acquisition of live pictures. It is a mandatory rank to be registered.
- Playback** : Allows acquisition of recorded pictures.
- All Cameras** : Allows the acquisition of pictures from all the cameras. (The picture of the cameras set to “Off” in the covert camera setting can be displayed.)
- Change Passwords** : Allows the changing of user’s password.

Configuration : Allows the viewing and editing of user registration information.



- Certain items cannot be selected depending on what the user authorization is.
- “Configuration” authorization can be used by only one user. From the time that a user logs in until that user logs out and gives up authorization, any other user that logs in is regarded as a user who does not have “Configuration” authority.
- “Playback” authorization can only be used by one user. From the time that a user logs in until that user logs out and gives up authorization, any other user that logs in is regarded as a user who does not have “Playback” authority.

- 2-2. (To change settings •••)

Select “change” and left-click. The “[Change Confirmation]” screen will appear.

- 2-3. If you want to make the change, left-click “change.” If you want to cancel a change, left-click “cancel.”

- 2-4. (When you have selected “change” •••)

The “[Completed]” screen will appear, so then left-click “User Registration.”

- The “[User Registration]” screen reappears.

- 2-5. (When you have selected “cancel” •••)

- The “[User Registration]” screen reappears.

- 3-1. (To delete a registered user •••)

Left-click on “remove” in the user ID that you want to delete in “Change authorities of users.”

- The “[Remove Confirmation]” screen appears.

- 3-2. If you want to delete it, left-click “remove.” If you don’t want to delete it, left-click “cancel.”

- 3-3. (If you have selected “remove” •••)

The “[Completed]” screen will appear, so left-click “User Registration.”

- The “[User Registration]” screen reappears.

- 3-4. (If you have selected “cancel” •••)

- The “[User Registration]” screen reappears.

- 4-1. (To register a new user •••)

Enter the new user ID and new password in “Add New User.”

- 4-2. Refer to step 2-1, select the “Authority” desired and check it.



- A user ID with the same name cannot be registered. The maximum number of characters that can be used in registering a password is 16. Both alphabet letters and numbers can be used with a distinction made between upper and lower case. You cannot use spaces.

4-3. If you want to make a new registration, left-click “register.” If you want to cancel a new registration, left-click “clear.”

4-4. (If you have selected “register” •••)
It will be added to “Change authorities of users.”

4-5. (If you have selected “clear” •••)
Clears the specified contents.

5-1. (To change the access method settings •••)
Select the item to be changed in the “Access Mode Setup.”

- Use Keep-Alive:
Maintains the connection of TCP in order to speed up the update of the live pictures, etc.
Uses keep-alive when the check mark is entered.
- Use SSL for Web Access:
Sets the level of the encryption function (SSL).
“No SSL”: Does not use the encryption function.
“Menu only”: Uses the encryption function for the menus only.
“Menu + Pictures”: Uses the encryption function for the menus and pictures.
- SSL Port Settings:
Sets the port number used for SSL.
- Band-Width Limit:
Controls the band width of the communication. The available setting items are “No Limit,” “30Mbps,” “20Mbps,” “10Mbps,” “7.5Mbps,” “5Mbps,” “3Mbps,” “2Mbps,” “1Mbps,” “750kbps,” “500kbps,” “300kbps,” “200kbps,” “100kbps.”



• When using SSL, the following message appears. Select “Yes” and then continue the operation.



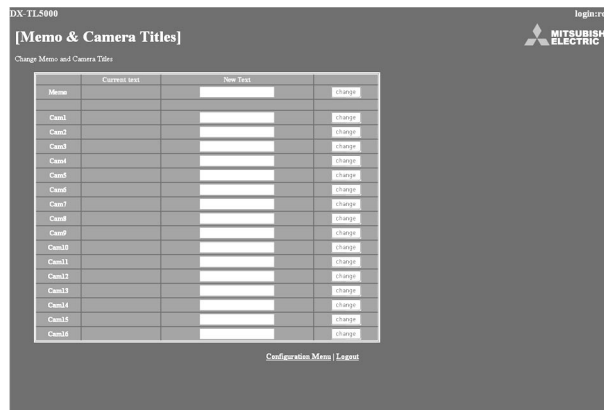
• When using keep-alive, the update speed of the picture becomes faster, however, the number of the users that can be connected at the same time is restricted to 5.

5-2. Set the desired setting in “New Settings” and then select “change” and left-click.

• Memo & Camera Titles

This is the screen for setting or changing the recorder and the camera titles.

1. Select “Memo & Camera Titles” and left-click.
 - The “[Memo & Camera Titles]” screen appears.



2. Enter the desired recorder or camera title to “New Text.”
 - The recorder and the camera titles currently set are shown in the “Current Text.”
3. Select “change” and left-click.

• E-mail Setup

This is the screen for setting the information related to the e-mail server or sender, and setting the e-mail address of the receiver.

1. Select “E-mail Setup” and left-click.
 - The “[E-mail Setup]” screen appears.



2. (When making the settings to send the e-mail •••)
Input the desired settings for “SMTP Server (Host Name or IP),” “POP Server (Host Name or IP),” “POP User ID,” “POP User Password,” “DNS Server 1 Address,” “DNS Server 2 Address,” “From:,” and “Recorder ID.”

- The settings currently set are shown in the “Current Settings.”

3. To send the test e-mail, select “From Address Test (send test mail)” and left-click.

- 4-1. (When setting the receiver’s address •••)

Enter the desired e-mail address to “New Address.”

- 4-2. Set the contents to be transmitted from the recorder to the PC.

- “Remain,” “Temp/Fan,” “Reboot,” “Record,” “Alarm,” and “Sensor” settings can be set.

- 4-3. Select “set” and left-click.

- 4-4. Select “active” and left-click.

- Select whether to be activated or inactivated the e-mail address you have set.

- 4-5. Select “send” to send the test e-mail.

• NAS Setup

This is the screen for making the settings to connect to the NAS server and for mounting or removing the NAS server.

1. Select “NAS Setup” and left-click.
 - The “[NAS Setup]” screen appears.

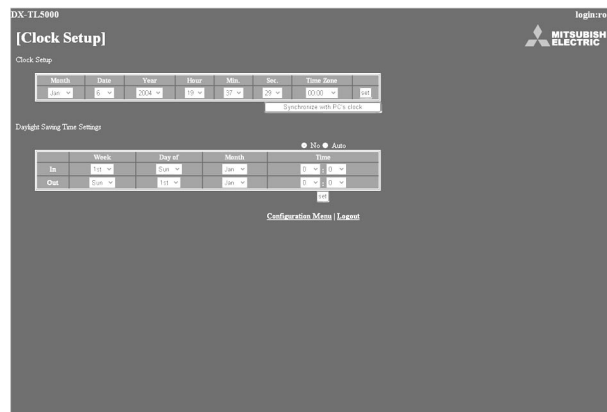


2. Input the desired settings for “IP Address,” and “Directory.”
3. Select “set” and left-click.
4. (When removing the NAS server •••)
Select “remove” and left-click.
5. (When execute the mount test •••)
Select “test” and left-click.

• Clock Setup

This is the screen for setting the clock of the recorder via PC.

1. Select “Clock Setup” and left-click.
 - The “[Clock Setup]” screen appears.



- 2-1. (When setting the clock using “Clock Setup” •••)

Set “Month,” “Date,” “Year,” “Hour,” “Min.,” “Sec.,” “Time Zone” to the desired time.

- 2-2. Select “set” and left-click.

3. (When setting the clock using “Synchronize with PC’s clock” •••)

When you want the clock of the recorder to be synchronized with the PC clock, select “Synchronize with PC’s clock” and left-click.

- The clock of the recorder is set to the same time as the PC clock.
- When using this function on the timing that the year, month, day, hour, or minute is changed, check the clock after synchronizing with the PC clock.

4. (When setting the daylight saving time function •••)

Select “No” when you do not want to use the daylight saving time function.

Select “Auto” to use the daylight saving function.

- When selecting “Auto,” set the desired time period for activating the daylight saving time function and then select “set.”

◆ Logout

In this screen, assign “Logout” settings to end the job.

1. Select “Logout” and left-click.
 - The “[Logout]” screen appears.



2. Close the Web Browser.

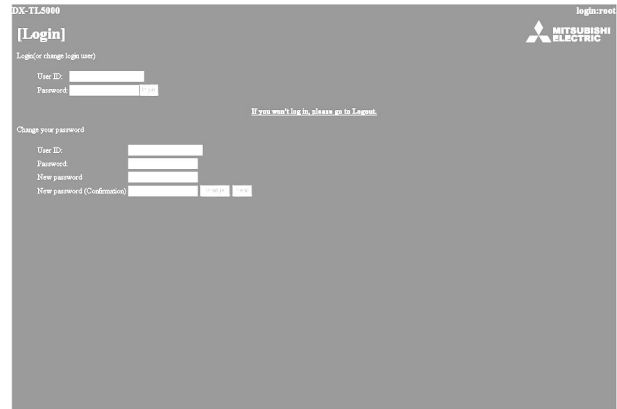


- If the browser is closed without correctly operating the log out, the user’s session ID will be saved for 5 minutes. If the Log in is made with the same user ID within that 5 minutes, operation limits may take effect.

◆ Change Login User

This screen is for changing the logged in user.

1. Select “Change Login User” and left-click.
 - The “[Login]” screen appears.



- 2-1. (To change the logged in user •••)

In the “Login (or change login user)” settings, execute step 2-1 and 2-2 in “■ Login” and change the logged in user.

- The logged in user is changed and the “Main Menu” screen appears.

- 2-2. (If the log in is made without changing the user •••)

Select “Return” button on the browser and left-click.

- 2-3. (To log out •••)

Select “If you won’t log in, please go to Logout.” and left-click.

Troubleshooting

If problems with the unit persist even after you've followed the suggestions below, please disconnect the power cord and contact the retailer from whom you purchased the unit.

	Description of problem	Please consult the following
INSTALLATION	The unit does not be turned on.	<ul style="list-style-type: none"> • Is the power cord properly plugged in? • Is the LOCK indicator light on? • Is the TIMER indicator light on? • Is the MAIN switch on the rear of the unit set to "OFF" ?
	Power is on, but the unit does not operate.	<ul style="list-style-type: none"> • Is the LOCK indicator light on? • Is the POWER indicator flashing? (The unit cannot be operated while the POWER indicator is flashing.) • The safety features may be in operation. Reset the unit by pressing the RESET button on the rear panel using a ballpoint pen or similar object, and then turn the power on again.
	Pictures are not appearing on the monitor.	<ul style="list-style-type: none"> • Are the monitor and camera(s) connected correctly? • Is the unit receiving an input signal from the selected camera? Check this by displaying the SPLIT16 screen.
	The quality of the monitor picture is poor.	<ul style="list-style-type: none"> • Is the connecting cord connected correctly? • Is the camera's focus adjusted correctly?
RECORDING	The unit does not start recording.	<ul style="list-style-type: none"> • Is the repeat recording setting for "Normal Recording Area," "Alarm Recording Area," or "LPA Recording Area" (System Menu → Memory → Data Management Setting for Main Memory) set to "Repeat Off" ? • The recording starts after the time set for recording rate is passed. Was the unit stopped during that time?
	The unit does not stop recording.	<ul style="list-style-type: none"> • Is the LOCK indicator light on? • During normal recording, alarm recording, and emergency recording, press the REC/STOP button for more than 2 seconds. • Is timer recording in progress? To stop timer recording, press the TIMER button for more than 2 seconds.
	The unit does not repeat the recording.	<ul style="list-style-type: none"> • Is the repeat recording setting for "Normal Recording Area," "Alarm Recording Area," or "LPA Recording Area" (System Menu → Memory → Data Management Setting for Main Memory) set to "Repeat On" ?
	The unit does not perform timer recording.	<ul style="list-style-type: none"> • Are the date and current time set accurately? • Are the recording start-/end-times and the recording rate set correctly? • Is the repeat recording setting for "Normal Recording Area," "Alarm Recording Area," or "LPA Recording Area" (System Menu → Memory → Data Management Setting for Main Memory) set to "Repeat Off" ?
	The unit does not perform alarm recording.	<ul style="list-style-type: none"> • Is the recording rate for alarm recording set to "— — —"? • Is the recordable capacity for alarm recording area full? • Is the unit in timer recording stand-by mode? (Is the TIMER indicator light on?) • Are the peripheral switches, etc., connected correctly?

	Description of problem	Please consult the following
PLAYBACK	The unit does not perform playback.	<ul style="list-style-type: none"> • Is the LOCK indicator light on? • Has the data been erased? • Is the correct playback device selected?
	The copy device does not respond.	<ul style="list-style-type: none"> • Has the recording medium been inserted correctly into the unit? • Is the unit currently in the middle of loading the recording medium? • Is the correct playback device selected? • Has the recording medium's write-protect been removed? • Is the power supply of peripheral recording device set ON? • Is the termination set correctly? (SCSI device only.) • Is the copy device registered in the <Add/Remove HDD Device> and <Add/Remove DVD/CD Drive> (System Menu->Memory)?
OTHERS	The camera cannot be controlled via this unit.	<ul style="list-style-type: none"> • Is the camera to be controlled connected correctly? • Is the <PTZ Setting> menu set correctly?
	The unit does not perform the motion detection function.	<ul style="list-style-type: none"> • Is trigger for alarm recording of the camera number for which the motion detection function to be executed set to "External" ? • Is the alarm recording rate of the camera number for which the motion detection function is executed set to "--"? • Is the value set in "Motion Threshold" of the <Motion Det> menu larger than that of "Motion Mask Settings" ? • Is the detection area set correctly?
	The unit cannot be controlled via the personal computer.	<ul style="list-style-type: none"> • Is the <COM/LAN> menu set correctly ? • Are the unit and the personal computer connected correctly ? • Is there a defect in the connecting cable ? • Is the proper connecting cable being used ?
	There is a camera number with a blue screen during split screen display.	<ul style="list-style-type: none"> • The screen of camera number with no video signal input appears blue even when setting for operation.
	Button operation is not working.	<ul style="list-style-type: none"> • Is the POWER indicator flashing? (The unit cannot be operated when the POWER indicator is flashing.) • Is the LOCK indicator light on?
	Cameras cannot be switched with the camera number buttons.	<ul style="list-style-type: none"> • Is the menu screen being displayed? Camera number buttons cannot be used when the menu screen is displayed.
	Menus cannot be set.	<ul style="list-style-type: none"> • When OUTPUT B is selected, the cursor of the mouse is displayed, however, the menu screen is not displayed and cannot be set. The menus can be set only when the OUTPUT A is selected.

Warnings and CALL OUT output

■ Warnings and their appropriate countermeasures

#1 Options in the CALL OUT output column:

- Selectable: Selects to output CALL OUT signal or not on the menu screen.
- Fixed: Outputs CALL OUT signal from the CALL OUT terminal regardless of the menu setting.
- None: Does not output CALL OUT signal, but displays a warning on the screen.



- CALL OUT signal output can be stopped by pressing the E button or clicking "Clear Warning" while displaying the warning display.

Warning Display	Countermeasure	Cancelling the warning	Log number	CALL OUT output #1
The remaining capacity of Normal Area in Main device has become less than **%.#2	• Copy data as necessary.	Click "Clear Warning" or press the E button.	LOG1200	Selectable
The remaining capacity of Alarm Area in Main device has become less than **%.#2			LOG1201	
The remaining capacity of LPA Area in Main device has become less than **%.#2			LOG1202	
The remaining capacity of Copy B disk has become less than **%.#2			LOG7200	
The remaining capacity of Normal Area in Main device has become 0%.	• When the warning is cancelled, the unit will start over-writing the oldest data remaining in the hard disk drive. • Copy data as necessary.	Click "Clear Warning" or press the E button.	LOG1100#3	Selectable
The remaining capacity of Alarm Area in Main device has become 0%.			LOG4100#4	
The remaining capacity of LPA Area in Main device has become 0%.			LOG1101#3 LOG4101#4 LOG1102	
The remaining capacity of disc in Copy A drive has become 0%.	• Replace media if necessary.	Click "Clear Warning" or press the E button.	LOG3100	None
The remaining capacity of disc in Copy B drive has become 0%.			LOG7100	Selectable
Copy data size error. Check the range of copy data or the disk space of copy media.	• Set the copy/restore range again. • Replace with new media.	Click "Clear Warning" or press the E button.	LOG3701#5	None
Copy media error. Cannot copy the data. Check the copy device.			LOG7701#6 LOG4701#4	
No disk. The drive has no disk or wrong type of disk. Put a proper disk into the drive.	• Insert the disc.	Click "Clear Warning" or press the E button.	LOG3702#5	None
The remaining capacity of disc in Copy A drive has become 0%. Put a new disc into the drive.			LOG7702#6 LOG4702#4	
The remaining capacity of disc in Copy B drive has become 0%. Put a new disc into the drive.	• Replace the disc.	Click "Clear Warning" or press the E button.	LOG3703#5	None
			LOG7703#6 LOG4703#4	
			LOG3704#5	None
			LOG7704#6	

#2 : The value depends on the setting. #7 : (The following numbers are in □□)

#3 : Log number for Recording

#4 : Log number for Restore

#5 : Log number for COPY A

#6 : Log number for COPY B

0 1 : CH 1 0 5 : CH 5 0 9 : CH 9 1 3 : CH 13

0 2 : CH 2 0 6 : CH 6 1 0 : CH 10 1 4 : CH 14

0 3 : CH 3 0 7 : CH 7 1 1 : CH 11 1 5 : CH 15

0 4 : CH 4 0 8 : CH 8 1 2 : CH 12 1 6 : CH 16

#8 :

14 □□ : Recording 24 □□ : Playback

34 □□ : Copy A

44 □□ : Restore 74 □□ : Copy B

(The following numbers are in □□)

00 : A (Internal) 10 to 26 : USB (External)

01 : B (Internal) 30 to 35 : SCSI (External)

02 : C (Internal) 40 to 47 : NAS (External)

03 : D (Internal)

Warning Display	Countermeasure	Cancelling the warning	Log number	CALL OUT output #1
No Camera Signal Camera signal is lost or distorted. Please check the camera and cable connection.	<ul style="list-style-type: none"> • Check whether the unit and camera are properly connected, and that electricity is on. • Check whether the video signal is being properly outputted. • Check to see if there is a camera set for operation with no video signal input. 	<p>Stop recording.</p> <p>Output video signals.</p> <p>Click "Clear Warning" or press the E button.</p>	LOG54□□#7	Fixed
(NONE)	<ul style="list-style-type: none"> • Continue the operation when there is no abnormality. • When the error occurs continuously, check the HDD/media, cable and termination or restart the unit. 	—————	LOG13□□#8 LOG23□□#8 LOG33□□#8 LOG43□□#8 LOG73□□#8	None
System suspended due to unstable processing. Restart the recorder. (System suspended due to unstable processing. Recording will be resumed.)	<ul style="list-style-type: none"> • Restart the unit. 	Click "Clear Warning" or press the E button.	LOG14□□#8 LOG24□□#8 LOG34□□#8 LOG44□□#8 LOG74□□#8	Selectable
The alteration part is found in the data.	—————	Click "Clear Warning" or press the E button.	LOG5500	None
Recorder restarted due to technical problems on the device.	—————	Click "Clear Warning" or press the E button.	LOG6200	Selectable
The recorder has been rebooted. The problem is not critical, but check the recorder.	<ul style="list-style-type: none"> • Check the unit. 	Click "Clear Warning" or press the E button.	LOG5100	None
Internal temperature is getting too high, check the ventilation of the recorder.	<ul style="list-style-type: none"> • Turn off the power and change the installation condition. 	Click "Clear Warning" or press the E button.	LOG5200	Selectable
Internal temperature is getting too high, stop the operation of the recorder immediately.	<ul style="list-style-type: none"> • Turn off the power and change the installation condition. 	Click "Clear Warning" or press the E button. Lower the temperature.	LOG5201	Fixed
The fan of the recorder needs to be checked.	<ul style="list-style-type: none"> • Turn off the power and stop using. 	Click "Clear Warning" or press the E button. Rotate the fan.	LOG5300	Fixed
Copying data stopped because of new record overwrites the old data.	<ul style="list-style-type: none"> • Stop HDD recording to continue copy/archive. 	Click "Clear Warning" or press the E button.	LOG3500#3 LOG7500#4	Fixed Fixed
New record will soon overwrite the old data in copying. Stop the recording, if you want to continue the copying.	<ul style="list-style-type: none"> • Stop HDD recording to continue copy/archive. • Stop copy/archive to continue HDD recording. 	Click "Clear Warning" or press the E button.	LOG3600#3 LOG7600#4	Fixed Fixed
(NONE)	<ul style="list-style-type: none"> • Restarts by watchdog operation. 	—————	LOG5101	None

UK

Mitsubishi Electric Europe B.V.
UK Branch Office
Visual Information Systems Division
Travellers Lane Hatfield Herts AL10 8XB

Telephone: +44 (1707)-278 684
Fax: +44 (1707)-278 541

GERMANY

Mitsubishi Electric Europe B.V.
German Branch Office
Electric Visual Systems
Gothaer Str. 8 40880 Ratingen Germany

Telephone: +49 (2102)-486 9250
Fax: +49 (2102)-486 7320

SPAIN

Mitsubishi Electric Europe B.V.
Spanish Branch Office
Ctra. de Rubi, 76-80 Apdo.420
08190 Sant Cugat del Valles
(Barcelona) SPAIN

Telephone: +34 (93)-565 3154
Fax: +34 (93)-589 4388

FRANCE

Mitsubishi Electric Europe B.V.
French Branch Office 25,
Boulevard des Bouvets 92741 Nanterre
Cedex

Telephone: +33 (1)-5568 5500
Fax: +33 (1)-5568 5731

ITALY

Mitsubishi Electric Europe B.V.
Italian Branch Office
Centro Direzionale Colleoni
Palazzo Perseo - Ingresso 2, Via
Paracelso 12, 20041 Agrate Brianza, Italy

Telephone: +39 (039)-605 31
Fax: + 39 (039)-605 3214

The Netherlands

Mitsubishi Electric Benelux
A Division of Mitsubishi Electric Europe B.V.
Niiverheidsweg 23A, 3641 RP Mijdrecht
Netherlands.

Telephone: +31 (297)-282 461
Fax: +31 (297)-283 936

Sweden

Mitsubishi Electric Scandinavia
Hammarbacken 14 Box750 SE-191 27
Sollentuna Sweden

Telephone: +46 (8)-625 1000
Fax: +46 (8)-35 1132

Ireland

Mitsubishi Electric Ireland
A Division of Mitsubishi Electric Europe B.V.
Westgate Business Park, Ballymount,
Dublin 24. Ireland

Telephone: +353 (1)-419 8800
Fax: +353 (1)-419 8895



DX - TL5000E